

HYDRAULIC INTENSIFIERS

hydraulic – hydraulic, single-acting, pmax. 500/125 bar

Description:

Hydraulic intensifiers increase hydraulic pressure by a fixed ratio. With this method it is possible, e.g. to use a low-pressure machine hydraulic system for consumers that can profitably benefit from a pressure that is multiple higher.

The intensification is achieved by means of a fixed ratio between two pistons surface areas. That means that the secondary pressure can be controlled by means of the primary supply pressure.

Once the adjusted default min. pressure in the integrated sequence valve is reached, the intensifier piston is activated and the operating pressure in the system increases by a factor of 3.85. With this the oil amount is of minor importance.

Another advantage is that there is no oscillatory piston movement required in the intensifier. Thus, the susceptibility to wear of components is reduced. Also a higher outlet pressure is immediately available.

Operating conditions:

In the high pressure range the required volume must not exceed the internal volume of the intensifier.

To monitor the high pressure range we recommend the use of a pressure gauge (see data sheet 600-3).

We also recommend the use of a pressure filter with a filter mesh of max. 10 µm to guarantee optimal functioning. (see data sheet 600-1)

The filter has to be connected at the low-pressure port **PN** of the intensifier.

Before putting the intensifier into service the hydraulic system must be completely vented.

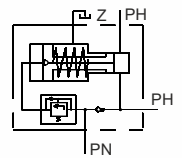
Make sure that no fluids can penetrate into the housing through the vent port **Z**.

Is there a danger of penetration, the sinter filter can be removed and instead a vent line can be connected to the G1/4 threaded port.



Webcode: 043003

We also design and manufacture special designs



Connections:

- ⊗ G1/4 threaded port
- ⊗ Manifold with O-ring

Sealing:

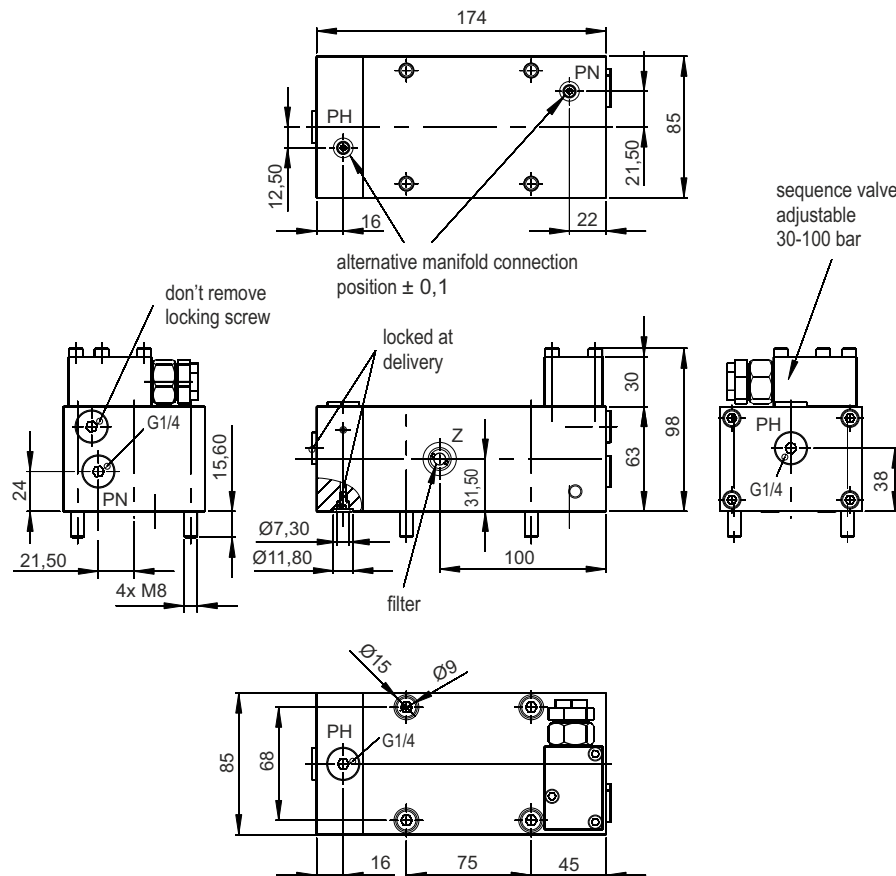
- ⊗ NBR, Operating temperature -20 °C up to +80 °C

Stroke volume:

- ⊗ 21 cm³ (approx. 1 cm³/m at 100 bar pressure rise)

Advantages:

- ⊗ Versatile connectivity
- ⊗ Vent line possible
- ⊗ Adjustable supply pressure
- ⊗ Outlet pressure immediately available
- ⊗ Stable design



Technical data:

Intensification ratio	3,85:1
Sequence pressure [bar]	30-100
Max. supply pressure [bar]	125
Max. outlet pressure [bar]	500
Max. flow rate [l/min]	8
Usable oil volume [cm ³]	21
Weight [kg]	6,43
Order no.	DÜHH-38-5-230

Accessories:

O-ring 8x2	6012-001
Locking screw G1/4	7900-001
Gauge (D.s. 600-3)	8200-000
Hydraulic filter (D.s. 600-1)	DÜF-10-5-001

Screw fittings for gauge and hydraulic filter available on request



Siemensstraße 16, 35325 Mücke (Germany)
 Phone: +49 6401 225999-0
 Fax: +49 6401 225999-50
 E-mail: info@hydrokomp.de
 Internet: www.hydrokomp.de